

V82/V182 HIGH PURITY PRESSURE REGULATOR



TECHNICAL SPECIFICATION:

Size range:	1/2" - 4" (20 mm - 110 mm)
Body Material:	PP-Pure® pigmented polypropylene PolyPure® natural polypropylene
Diaphragm:	EPDM; PTFE with FKM backing
End Connections:	Metric (DIN) spigot SDR11

FEATURES:

- No wetted metal components
- Pressure gauge isolated from media
- Stainless steel gauge material
- May be installed in any position
- Setpoint may be adjusted while valve is under pressure

OPERATING PARAMETERS:

Pressure Range: 7 - 150psi (1/2" - 2")
14 - 90psi (2-1/2" & 3")
13 - 60 psi (4")

Temperature: -4° F to 176° F

Min. Pressure Delta: 14psi

- Controls downstream pressure at a constant set point
- As input pressure fluctuates, the spring set force opens and closes the valve diaphragm to maintain a constant output pressure

PP-PURE® SAMPLE SPECIFICATION:

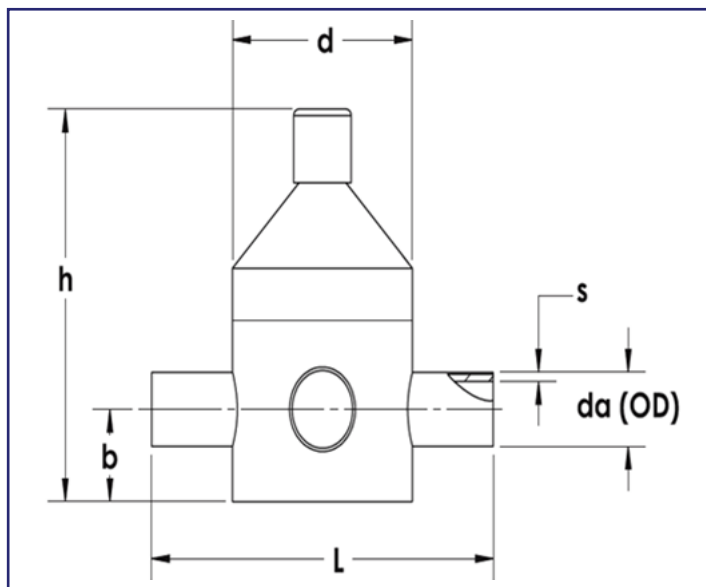
All PP-Pure® pressure regulating valves shall be made from pigmented polypropylene resin, shall have PTFE or EPDM diaphragms, and shall be cleaned and double-bagged. 1/2" – 2" (20mm – 63mm) shall be model V182 and pressure rated to 150psi at 68° F. 2-1/2 - 4" (75mm – 110mm) shall be model V82 and pressure rated to 90psi at 68° F through 3" and 60psi at 68° F in 4". PP-Pure® regulating valves shall have an integral gauge guard and allow for inline adjustments of the valve.

POLYPURE® SAMPLE SPECIFICATION:

All PolyPure® pressure regulating valves shall be made from natural, unpigmented polypropylene resin, shall have PTFE or EPDM diaphragms, and shall be cleaned and bagged. 1/2" – 2" (20mm – 63mm) shall be model V82 and pressure rated to 150psi at 68° F. PolyPure® regulating valves shall have an integral gauge guard and allow for inline adjustments of the valve.

V82/V182 HIGH PURITY PRESSURE REGULATOR

DIMENSIONS:



Size		Model		s (in)	L (in)	d (in)	h (in)		b (in)	
inch	mm	PP-Pure®	PolyPure®				PP-Pure®	PolyPure®	PP-Pure®	PolyPure®
1/2	20	V182	V82	0.075	5.91	2.76	5.79	5.12	1.38	1.18
3/4	25	V182	V82	0.091	7.48	3.94	7.09	6.69	1.97	1.58
1	32	V182	V82	0.114	7.48	3.94	7.09	6.69	1.97	1.58
1-1/4	40	V182	-	0.146	9.45	5.12	9.06	-	2.17	-
1-1/2	50	V182	V82	0.181	9.45	5.12	9.06	9.06	2.17	2.17
2	63	V182	V82	0.228	10.24	6.10	9.84	11.22	1.57	2.95
2-1/2	75	V82	-	0.268	11.81	7.48	13.78	-	3.94	-
3	90	V82	-	0.323	14.17	9.85	16.73	-	4.72	-
4	110	V82	-	0.394	16.34	11.81	19.49	-	5.91	-