

T-342 DIAPHRAGM VALVE WITH SANITARY END CONNECTIONS



TECHNICAL SPECIFICATION:

Body Material:	Purad® (PVDF): 1/2" – 2" PP-Pure® (PPn): 1/2" – 2" Polypure® (PP): 1/2" – 2"
Bonnet Material:	PPG
Diaphragm:	PTFE with EPDM backing EPDM
End Connections:	Sanitary adapter
Operator:	Handwheel

FEATURES:

- Unibody molded construction valve
- Beadless welds maintain smooth pipe ID with no weld bead or crevices for bacteria build-up. Ideal for life science and pharmaceutical industries
- Fabricated in a class 1000 cleanroom. Cleaned and double bagged for shipping
- No wetted metal components
- Integral lockout device to prevent unauthorized cycling can be locked in multiple positions
- Position indicator with marked 25%, 50%, and 75% open positions
- Fully serviceable with replacement diaphragms available

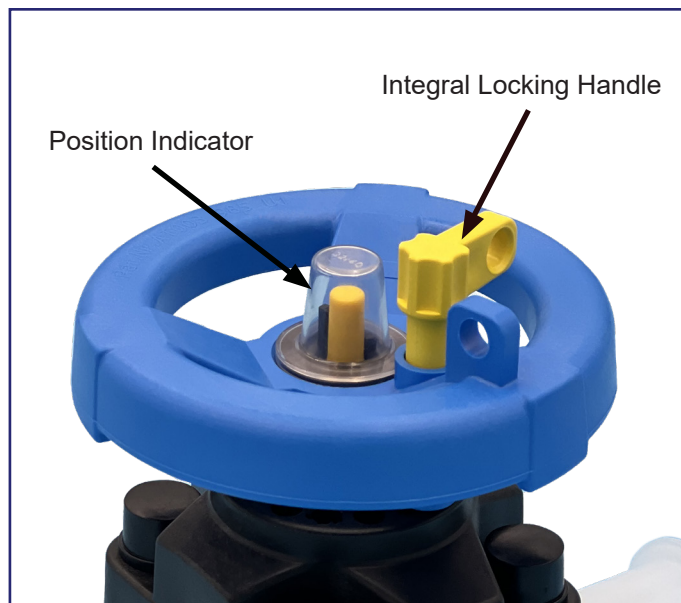
SAMPLE SPECIFICATIONS:

1/2" – 2" (20mm – 63mm) valves shall be Type-342 style from the (Purad® PVDF, PolyPure® PPn, PP-Pure® PP) high purity resin. Valve bodies are to be unibody, molded design. Diaphragm material is to be (EPDM-backed PTFE, EPDM). All metal nuts and bolts must be capped or covered to reduce metal exposure. Top works must include integral lockout device on the handle and position indicator. Valves to be shipped cleaned and double bagged.

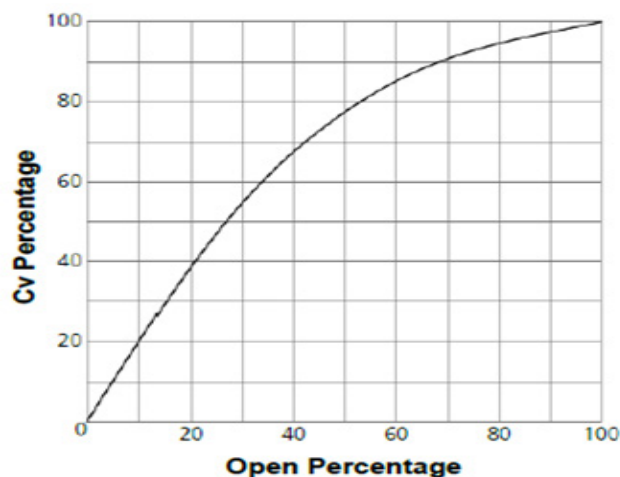
CV VALUE:

(100% Open)

mm	inch	Cv
20	1/2	5.0
25	3/4	6.5
32	1	15.3
40	1-1/4	31.2
50	1-1/2	34.7
63	2	60.7

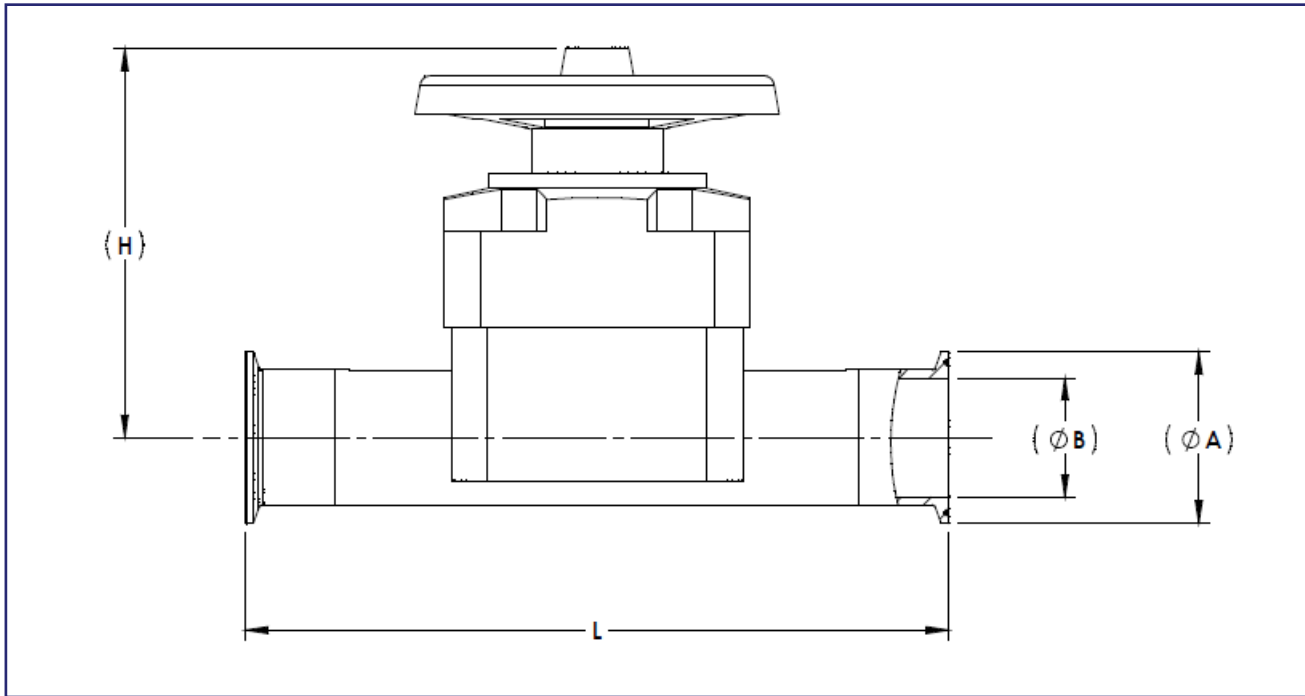


FLOW CHARACTERISTICS:



T-342 DIAPHRAGM VALVE WITH SANITARY END CONNECTIONS

DIMENSIONS:



SIZE			L (in)	H (in)	ØA (in)	ØB PVDF (in)	ØB PP-PURE®/ POLYPURE® (in)
mm	inch	Sanitary (in)					
20	1/2	3/4	8	3.94	0.98	0.64	0.59
25	3/4	1	8-3/8	3.94	1.98	0.83	0.77
32	1	1-1/2	8-7/8	4.21	1.98	1.39	1.39
40	1-1/4	1-1/2	10-1/4	5.67	1.98	1.39	1.29
50	1-1/2	2	10-1/4	5.67	2.49	1.73	1.61
63	2	2-1/2	11	6.69	2.99	2.24	2.02