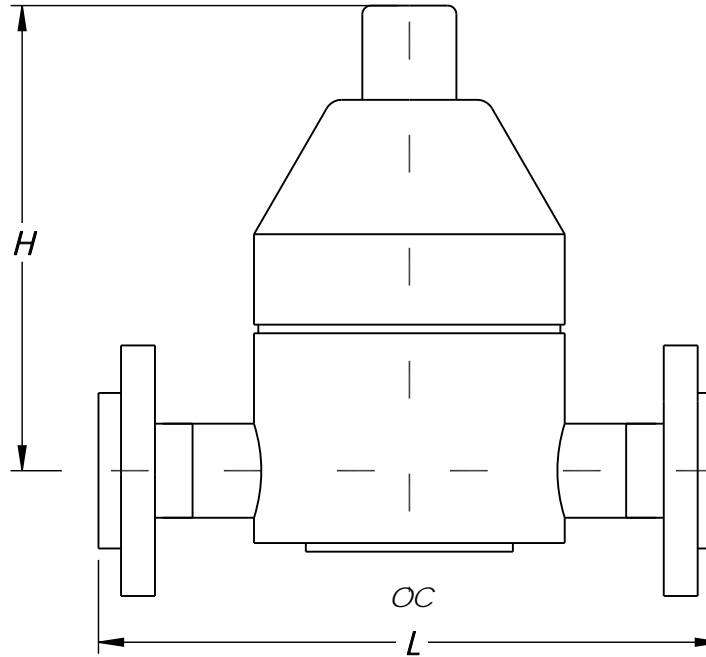



NOMINAL SIZE		L	H
INCHES	mm		
1/2"	20	7"	4-5/8"
3/4"	25	9"	6-3/4"
1"	32	10"	6-3/4"
1-1/4"	40	11"	6-3/4"
1-1/2"	50	13"	9-3/4"
2"	63	13"	9-3/4"

REV	DATE	DESCRIPTION	BY	FROM
A	5/14/15	FIRST ISSUE	CW	MW



UNLESS OTHERWISE SPECIFIED DIMENSIONS ARE IN INCHES MACHINING: 2 PL DECIMALS ± .01 TOLERANCES: 3 PL DECIMALS ± .005 ANGULAR ± 1/2° FRACTIONAL ± 1/64 FABRICATION: 1/2" - 8" ± 1/4 TOLERANCES: 10" AND UP ± 1/2 ANGULAR ± 1.0°	THIS DRAWING AND ALL INFORMATION HEREON IS THE PROPERTY OF ASAHI/AMERICA. ANY COPYING, REPRODUCTION OR UNAUTHORIZED USE IS FORBIDDEN WITHOUT WRITTEN CONSENT.		ASAHI/AMERICA ISO 9001 CERTIFIED 655 ANDOVER STREET, LAWRENCE, MA	
	DR: C. Williams REV:	NAME: C. Williams DATE: 05/14/15		
WELD TYPE: I.R. MATERIAL: PP/PVDF FINISH: N/A	APPR: PRODUCT: VALVE & ACT WO#/SO#:	JDE PART # SIZE: A SCALE: N/A	DWG #: PP_PVDF_V186_FLANGED REVISION:	SHEET 1 OF 1