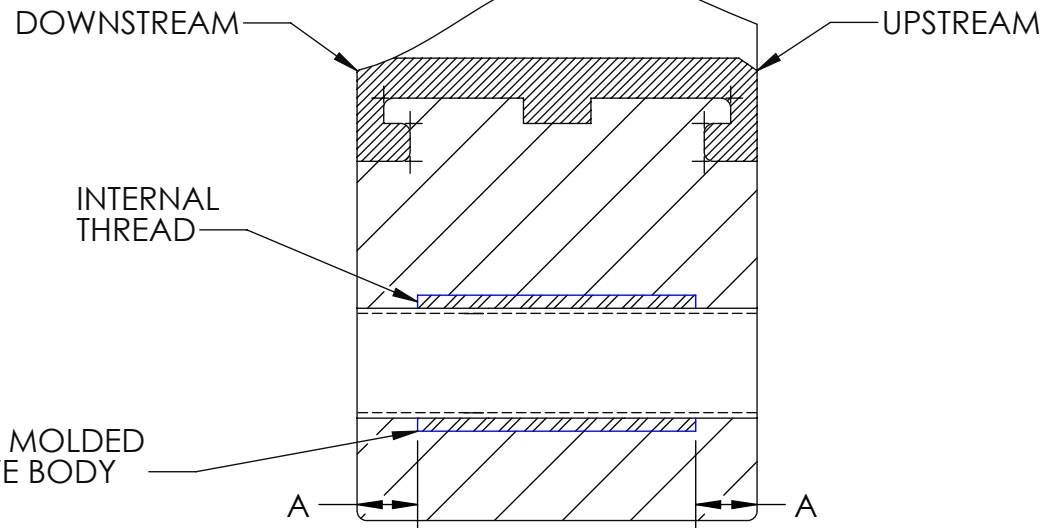
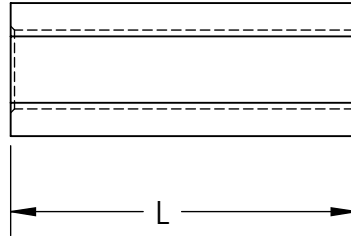
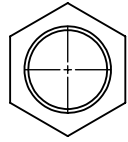


REV	DATE	DESCRIPTION	BY	APP'D
A	6/27/11	FIRST ISSUE	JH	DH

3"-12"  
T-57IL LUG




LUG AS MOLDED  
IN VALVE BODY

CROSS SECTION OF VALVE BODY

VALVE SIZE	T	L	A
3	5/8-11 UNC	1.370	.220
4	5/8-11 UNC	1.370	.410
6	3/4-10 UNC	2.150	.325
8	3/4-10 UNC	2.150	.640
10	7/8-9 UNC	3.140	.635
12	7/8-9 UNC	3.140	.970

NOTES:  
1. DIMENSION "A" MUST BE FACTORED IN WHEN  
CALCULATING BOLT LENGTHS.

UNLESS OTHERWISE SPECIFIED DIMENSIONS ARE IN INCHES		THIS DRAWING AND ALL INFORMATION HEREON IS THE PROPERTY OF ASAHI/AMERICA. ANY COPYING, REPRODUCTION OR UNAUTHORIZED USE IS FORBIDDEN WITHOUT WRITTEN CONSENT.		<b>ASAHI/AMERICA</b> ISO 9001 CERTIFIED 35 GREEN STREET, P.O. BOX 653, MALDEN, MA. 	
MACHINING TOLERANCES:	2 PL DECIMALS ± .01	DR	J. HUGHES	DATE	6/27/11
	3 PL DECIMALS ± .005	APPD	D. HURLEY	DATE	6/27/11
	ANGULAR ± 1/2°	PROD			
	FRACTIONAL ± 1/64	PRODUCT BF LUGS			
FABRICATION TOLERANCES:	1/2" - 8" ± 1/4	WO#/CO#			
	10" AND UP ± 1/2	SIZE A		DWG. NO. M02BF4948	
	ANGULAR ± 1.0°	SCALE		SCALE 1:2	
MATERIAL	SS	SHEET 1 OF 1		REV A	
FINISH	125 μ"				