

ASAHI/AMERICA, Inc.

Closure Coupling

Polypropylene Electrofusion

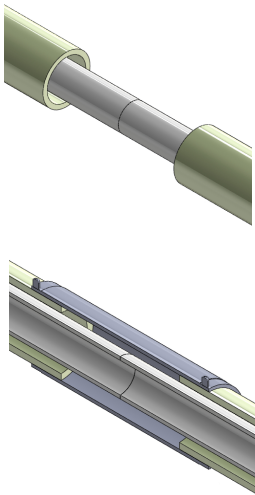
- Ideal for Duo-Pro staggered welding
- Dissimilar material
- Independent carrier pressure test
- Conforms to ASME B31.3
- Slips over SDR pipe
- Use existing welding equipment

Description

Asahi/America's PP closure coupling offers an alternative method of installing Duo-Pro double contained piping systems. The coupling slips over the outside diameter of the pipe, allowing the carrier to be welded and pressure tested before sealing the containment.

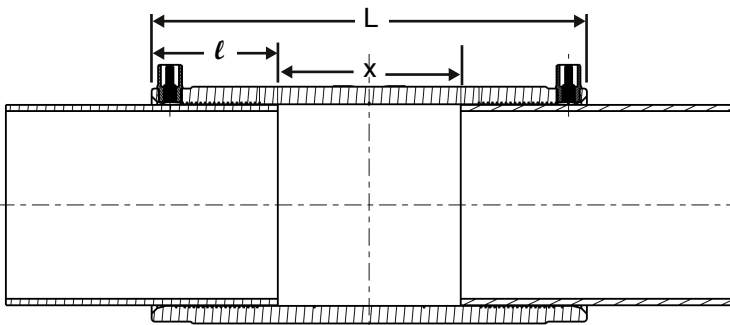
Installation

Install using Asahi's Polymatic welding equipment with electrofusion leads. A supplied fitting barcode scans the welding parameters and starts the weld. Closure couplings slip entirely over the containment pipe. Weld distances should be marked on the containment pipe before slipping into place.



Part Number	L	ℓ	x	List Price
507700030	7	1.7	3.5	130.00
507700040	8	2	4	150.00
507700060	8.4	2.2	4	180.00
507700080	10	2.6	5	380.00

x = maximum allowable opening

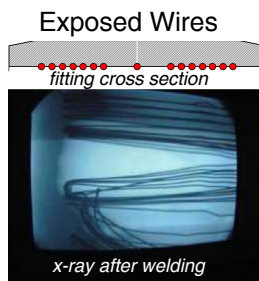


Specifications

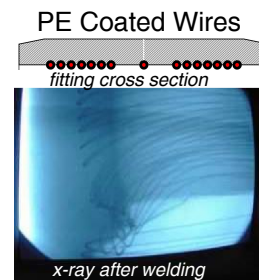
Size Range: 3" (90mm) - 8" (200mm)
 Material: Pro150, Pro45

Design Theory

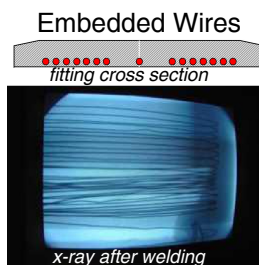
Designed using the same strict tolerances of the standard length electrofusion coil design proven to be the safest electrofusion coupling on the market. AGRU of Austria installs the electrofusion wire below the surface of the coupling. The wire is coated with a proprietary coating



Exposed wires can lead to fire due to installation "drift". Sliding the pipe into the fitting will move the wires, causing a concentration of heat.



PE coated wires will drift during installation as well. The added protection of the PE coating requires increased heating to fully penetrate the pipe wall.



Asahi's electrofusion fittings have embedded wires which do not drift during installation. Resulting in safer installations and better fusion.