

Asahi/America Inc. Swimming Pools and Water Parks

PRODUCT LINE CARD



Valves • Actuators

**Another
Corrosion
Problem
Solved.™**



Your Experts in Plastics™



Located in Lawrence, MA, Asahi/America is a diversified ISO9001:2008 certified manufacturer and supplier of thermoplastic corrosion resistant fluid flow products including valves, actuators, piping systems and components.

We are your experts in plastics. Asahi/America pioneered the market for thermoplastic valves in the United States and Latin America during a time when there was no viable alternative to metal for valves and piping systems. Our team of seasoned and educated professionals is poised to guide you through your entire project from product selection to installation and maintenance.



Your Experts in Plastics™

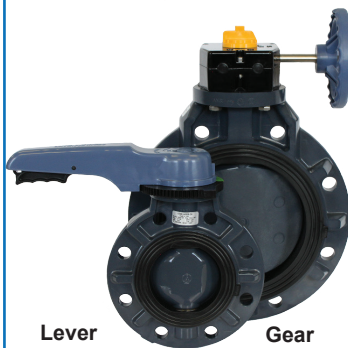
- 200,000 square foot manufacturing facility in Lawrence, MA
- Butterfly, wafer check valves and electric actuators built in MA
- Application, CAD, and product engineers ready to assist you
- Network of over 600 national and international distributors
- Thousands of installs in leading aquatic sites all over the world

Solutions for Chlorinated Water Applications

Pool-Pro® Butterfly Valves

The First PVC Butterfly Valve Exclusively Designed for the Pool Service Industry

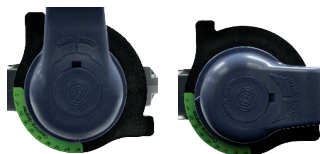
- Completely Submersible
- PVC/PVC/EPDM Construction
- Stainless Steel Stem
- ISO Mounting Pad



Lever

Gear

Specifications
Sizes: 1-1/2" - 12"
Models: Wafer Style
Operators: Lever or Plasgear™
Bodies: PVC
Discs: PVC
Seats and Seals: EPDM
Stems: Stainless Steel



Open

Closed



Omni® Type-27 Ball Valve

Specifications
Sizes: 3/8" - 2"
Models: Socket and Threaded
Bodies: PVC, CPVC
Seats: PTFE backed with EPDM
Seals: EPDM



Type-21/21a Ball Valve

Specifications
Sizes: 1/2" - 6"
Models: PVC and CPVC: Socket, Threaded and Flanged (ANSI)
Bodies: PVC, CPVC
Seats: PTFE backed with EPDM or FKM
Seals: EPDM, FKM



Solutions for Chlorinated Water Applications

Ball Check Valve

Specifications

Sizes: True Union: 1/2" - 2"
Single Union: 3" - 4"

Models: Socket, Threaded,
Flanged (ANSI)

Bodies: PVC, CPVC

Seats: EPDM, FKM

Seals: EPDM, FKM

Options: Foot Valve Screen and Stainless Steel Springs



Swing Check Valve

Specifications

Sizes: 3/4" - 8"

Models: Flanged (ANSI)

Bodies: HI-PVC

Seats: EPDM, FKM

Options: Lever and Weight
Stainless Steel
Springs



Wafer Check Valve

Specifications

Sizes: 3" - 12"

Bodies: PVC

Seats: EPDM, FKM

Options: SWP-8 (Stainless
Steel) Spring, ETFE Coated



Series 79 Pneumatic Actuator

Specifications

Models: A79P - M79P

Torque: 50 in/lbs. -
44,611 in/lbs.

Action: Single Acting
Double Acting

Air Supply: 80 - 120psi

Material: PAG, 316SS, Rilsan Coated Aluminum

Design: Rack and Pinion

Options: Filter Regulator, Solenoids, Limit Switches,
Positioners, Declutchable Manual Override



Series 17 Electric Actuator

Specifications

Torque: 350 in/lbs.

Voltage: 110/220 VAC single phase, 24 VDC

Amp Draw: 0.5

Wiring: 1.25M flying leads

Max. Ambient Temp.: 150°F

Limit Switches: 2- SPDT
end of travel switches
2-SPDT
dry contact switches
rated 5A@250 VAC

Heater: 0.5W

Cycle Time per 90° : 12 seconds



Shown with
Type-21
ball valve

Series 10 Electric Actuator

Specifications

Torque: 1320-26,040 in/lbs.

Voltage: 110VAC

Enclosure: Type 4X/6

Conduit: 2 x 3/4 NPT

Manual Override: Declutching

Auxiliary Contacts: 2- SPDT switches

Heater: 7-10 Watts

Options:

Voltages, Positioners,
Transmitter, Explosion Proof Enclosure



Shown with
Type-57
butterfly valve

Series 92 Electric Actuator

Specifications

Torque: 400-2000 in/lbs.

Voltage: 120VAC

Enclosure: Type 4X

Conduit: 2 x 1/2 NPT

Manual Override: Declutching

Options:

Voltages, Auxiliary Contacts,
Heater, Positioners,
Transmitter,
Explosion Proof Enclosure



UL-508 LISTED
ATEX Ex d IIB T4
UL-1203

Series 94 Electric Actuator

Specifications

Torque: 150, 300 in/lbs.

Voltage: 120VAC

Enclosure: Type 4X

Conduit: 2 x 1/2 NPT

Manual Override: Declutching

Options:

Voltages, Auxiliary Contacts,
Heater, Positioners,
Transmitter



UL-508 LISTED



Another Corrosion Problem Solved.TM



ASAHI/AMERICA[®]

Tel: 800-343-3618; 781-321-5409

Direct Sales: East (800) 232-7244
Central (800) 442-7244
West (800) 282-7244

Fax: 800-787-6861

www.asahi-america.com
asahi@asahi-america.com