

Essential Flow Solutions for Mission Critical Facilities

Hydronic Piping



Asahitec PP-RCT piping systems are the confident choice for chilled water and condenser water services in data centers and mission critical applications. Their benefits over steel and copper include:

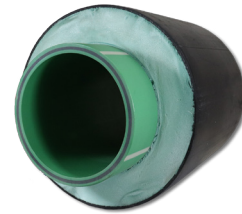
FEATURES AND BENEFITS

- 50 year service life with continuous like-new performance
 - Corrosion-free: will not scale, flake, rust, or pit
 - Homogenous, leak-free heat-fusion welds
 - Far greater insulating properties than metallics
 - 1600 times better than copper, and 225 times better than steel
 - Hot-tap capability to 2" diameter
 - Available pre-insulated to meet ASTM E-84 flame and smoke standards
 - PP-R/PP-RCT ball and butterfly valves
 - **Backed by a 10 year warranty***
- *Please see warranty policy on our web site for details.

Chilled Water, Cooling Tower and CDU Applications



MATERIAL: PP-RCT
SIZES: 1/2" through 20"



**Asahitec[™] PP-RCT
HDPE Jacketed Systems**

Double Containment for Over-Head Water & Critical Applications

Asahi/America has been manufacturing and supplying double containment piping systems to meet Environmental Protection Agency (EPA) standards for over 30 years. Asahi/America double wall systems are designed and engineered to provide essential containment of water over sensitive electronics like server rooms and other critical applications.

Poly-Flo[®] - PP-R/Advanced PE



SIZES: 1"x1-1/2", 2"x3" and 4"x6"

FEATURES AND BENEFITS

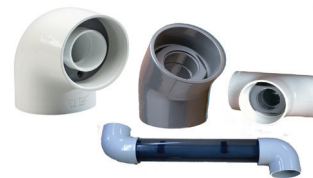
- Engineered to protect our environment, people and critical areas from the dangers of fluid leaks
- Wide selection of corrosion resistant thermoplastic double wall systems
- Complete system offering includes pipe, fittings and fabricated fittings
- Leak detection options available

Duo-Pro[®] - PP-R/PVDF/ECTFE



SIZES: 1"x3" through 16"x20"

Pro-Lock[®] - PVC/CPVC



SIZES: 1/2"x2" through 6"x10"



**Another
Corrosion
Problem
Solved.**[™]



Asahi/America's valve and actuation products have been used in the wide variety of industrial applications for over four decades. We feature a full complement of thermoplastic valves including ball, butterfly, diaphragm, globe, gate and ball check. In addition, both pneumatic and electric actuators are available to be factory mounted to our valves in our shop or purchased separately for field mounting.

All our manual and actuated valves come with an industry leading three year warranty.



Thermoplastic Ball Valves



**Type-21
True Union**
1/2" - 6"



**Type-21 SST
Flow Control**
1/2" - 4"

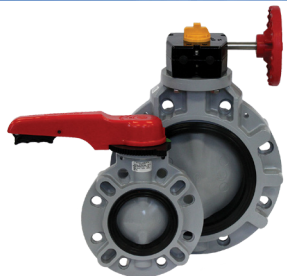


**Type-23
Multiport®**
1/2" - 6"

Thermoplastic Butterfly Valves



**Type-57P
PVC**
1-1/2" - 14"



**Type-57P
CPVC**
1-1/2" - 14"

Actuated Valve Packages



**Series 92 on
Type-21
Ball Valve**

**Electric
Ball Valves
Butterfly Valves**



**Series 94 on
Type-21
Ball Valve**



**Series 79P on
Type-57P
Butterfly Valve**

**Pneumatic
Ball Valves
Butterfly Valves
Diaphragm Valves**

**Another
Corrosion
Problem
Solved.™**

www.asahi-america.com

655 Andover St. Lawrence, MA 01843 - 1-800-343-3618