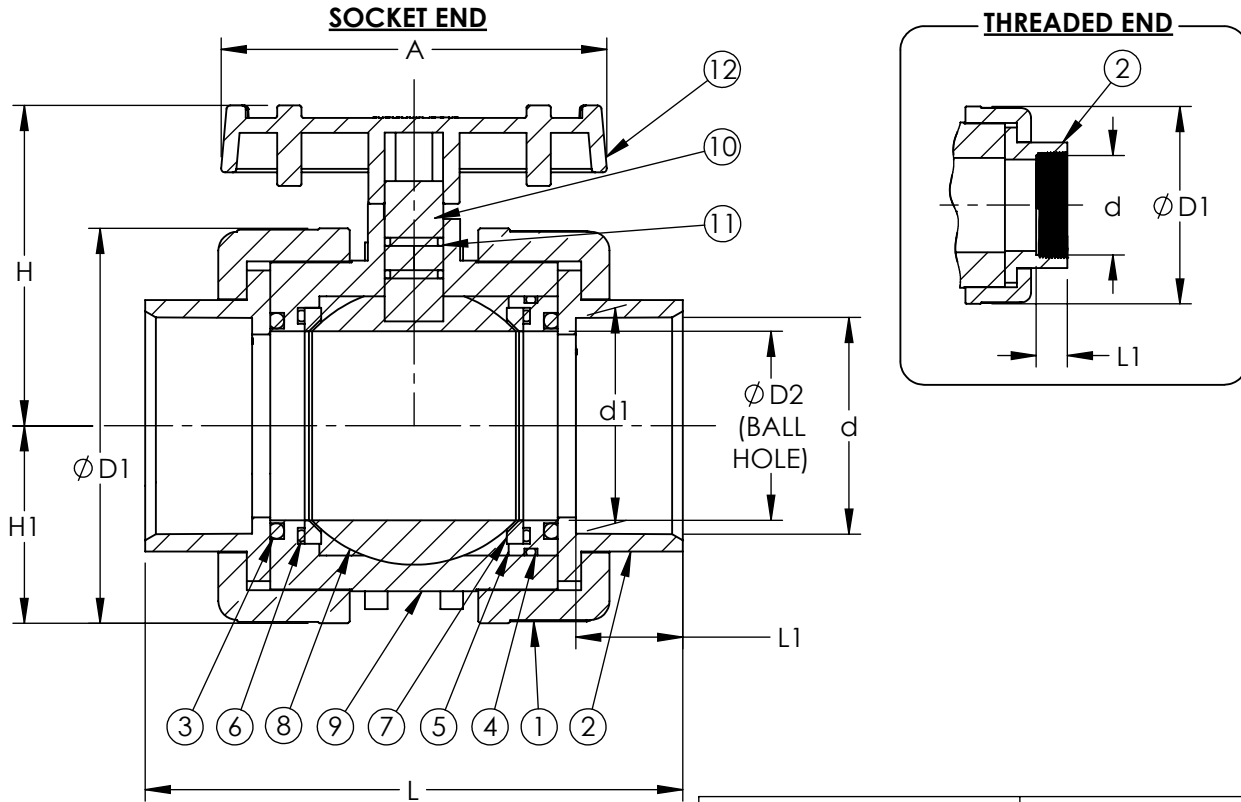


NOMINAL SIZE		SOCKET						NPT THREADED					
		H	H1	A	D1	D2	d	d1	L	L1	d	L	L1
1/2"	15mm	2.25	0.97	2.84	1.93	0.58	0.85	0.83	3.71	.90	1/2" - 14 NPT	3.15	0.54
3/4"	20mm	2.54	1.16	3.09	2.32	0.78	1.06	1.05	4.18	1.02	3/4" - 14 NPT	3.66	0.56
1"	25mm	2.82	1.35	3.46	2.70	0.98	1.33	1.31	4.77	1.14	1" - 11.5 NPT	4.17	0.66
1-1/4"	32mm	3.23	1.57	3.94	3.13	1.26	1.67	1.65	5.20	1.26	1 1/4" - 11.5 NPT	4.76	0.68
1-1/2"	40mm	3.67	1.88	4.33	3.76	1.55	1.91	1.89	6.03	1.44	1 1/2" - 11.5 NPT	5.12	0.68
2"	50mm	4.39	2.29	5.12	4.57	1.96	2.39	2.37	6.72	1.50	2" - 11.5 NPT	5.90	0.70
2-1/2"	65mm	5.71	3.29	6.64	6.58	3.02	2.89	2.87	9.06	1.75	2 1/2" - 8 NPT	9.01	0.93
3"	80mm	5.71	3.29	6.64	6.58	3.02	3.52	3.49	9.28	1.88	3" - 8 NPT	8.39	1.02
4"	100mm	6.69	4.12	8.03	8.23	3.80	4.52	4.49	11.20	2.23	4" - 8 NPT	11.18	1.09

REV	DATE	DESCRIPTION	BY	FROM
A	5/7/20	FIRST ISSUE	JO	DH
B	5/12/21	SWAP SCKT & THD "L" VALUES	JO	DH



PARTS			
NO.	DESCRIPTION	PCS.	MATERIAL
1	UNION NUT	2	PVC-U
2	END CONNECTOR	2	PVC-U
3	O-RING (END CONN)	2	EPDM OR FKM
4	O-RING (BODY)	1	EPDM OR FKM
5	BALL SEAT CARRIER	1	PVC-U
6	O-RING (BALL/SEAT)	2	EPDM OR FKM
7	BALL SEAT	2	PTFE
8	BALL	1	PVC-U
9	BODY	1	PVC-U
10	STEM	1	PVC-U
11	O-RING (STEM)	2	EPDM OR FKM
12	HANDLE	1	PVC-U

UNLESS OTHERWISE SPECIFIED
DIMENSIONS ARE IN INCHES

MACHINING TOLERANCES: 2 PL DECIMALS ±.01
3 PL DECIMALS ±.005

ANGULAR FRACTIONAL ± 1/2°
± 1/64

FABRICATION TOLERANCES: 1/2" - 8" ± 1/4"
10" AND UP ± 1/2"

ANGULAR ± 1.0°

WELD TYPE: N/A

MATERIAL: PVC

FINISH: 125μ"


THIS DRAWING AND ALL INFORMATION HEREIN IS THE PROPERTY OF ASAHI/AMERICA. ANY COPYING, REPRODUCTION OR UNAUTHORIZED USE IS FORBIDDEN WITHOUT WRITTEN CONSENT.

NAME	DATE
J. O'Connor	05/07/20
REV	
APPR	05/12/21

PRODUCT: VALVE & ACT

WO#/SO#

ASAHI/AMERICA
ISO 9001 CERTIFIED
655 ANDOVER STREET, LAWRENCE, MA



1/2" - 4" ASAHI/AMERICA GP-V GENERAL PURPOSE BALL VALVE PVC ASTM SOCKET/NPT THREAD

JDE PART # 1644005-040, 1645005-040

SIZE A	DWG # 16441645BV	REVISION B
SCALE N/A	SHEET 1 OF 1	